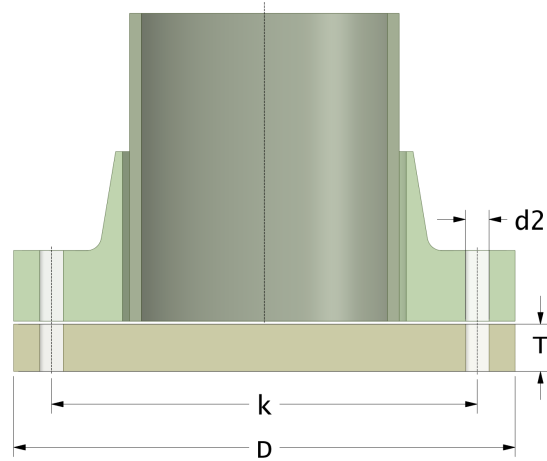
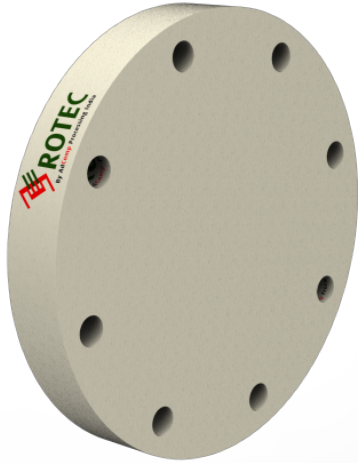


Rotec SMC Blind Flange

Drilling Standard: JIS B2220 30K



#	DN (mm)	Pmax (bar)	D (mm)	k (mm)	Holes (no.)	d2 (mm)	T (mm)	Article Number
1	150	25	325	275	12	27	38	BFP-150-25/30K
2	150	32	325	275	12	27	43	BFP-150-32/30K
3	200	25	380	320	12	27	49	BFP-200-25/30K
4	200	32	380	320	12	27	53	BFP-200-32/30K
5	250	25	450	390	12	33	57	BFP-250-25/30K
6	250	32	450	390	12	33	65	BFP-250-32/30K
7	300	25	540	450	16	33	65	BFP-300-25/30K
8	300	32	540	450	16	33	73	BFP-300-32/30K

Disclaimer

Whilst every care is taken to ensure that the information on this website is complete and accurate, AdComp Processing Technology Pvt. Ltd. India cannot accept responsibility for any omissions or inaccuracies or for any consequences arising therefrom. By using this website, the user accepts the terms of this disclaimer.

07-02-2023