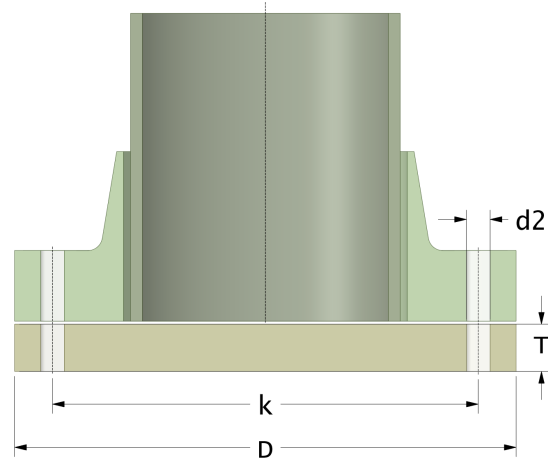
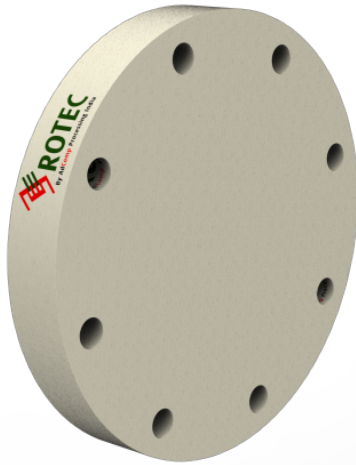


## Rotec SMC Blind Flange

Drilling Standard: EN1092 PN10



#	DN (mm)	Pmax (bar)	D (mm)	k (mm)	Holes (no.)	d2 (mm)	T (mm)	Article Number
1	15	10	98	65	4	14	21	BFP-15-10/16
2	20	10	98	75	4	14	21	BFP-20-10/16
3	25	10	116	85	4	14	21	BFP-25-10/16
4	32	10	140	100	4	18	21	BFP-32-10/16
5	40	10	154	110	4	18	21	BFP-40-10/16
6	50	10	164	125	4	18	21	BFP-50-10/16
7	65	10	184	145	4	18	21	BFP-65-10/16
8	80	10	200	160	8	18	25	BFP-80-10/16
9	100	10	228	180	8	18	25	BFP-100-10/16
10	125	10	254	210	8	18	25	BFP-125-10/16
11	150	10	285	240	8	22	25	BFP-150-10/16
12	200	10	340	295	8	22	30	BFP-200-10/10
13	250	6	395	350	12	22	30	BFP-250-06/10
14	250	10	395	350	12	22	40	BFP-250-10/10
15	300	6	445	400	12	22	33	BFP-300-06/10
16	300	10	445	400	12	22	35	BFP-300-10/10

### Disclaimer

Whilst every care is taken to ensure that the information on this website is complete and accurate, AdComp Processing Technology Pvt. Ltd. India cannot accept responsibility for any omissions or inaccuracies or for any consequences arising therefrom. By using this website, the user accepts the terms of this disclaimer.

07-02-2023