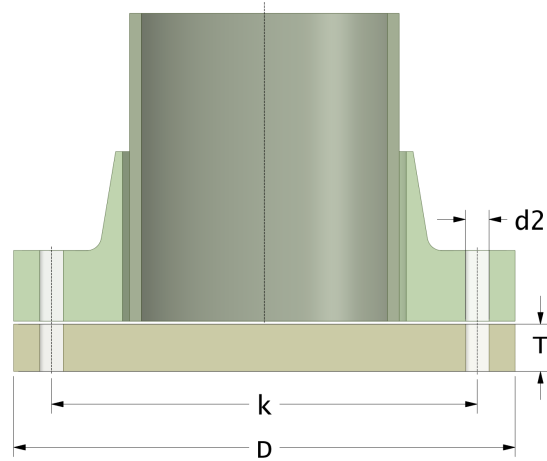
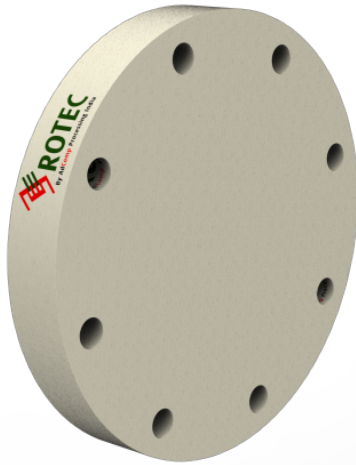


## Rotec SMC Blind Flange

Drilling Standard: AS 2129 Table F



#	DN (mm)	Pmax (bar)	D (mm)	k (mm)	Holes (no.)	d2 (mm)	T (mm)	Article Number
1	150	20	305	260	12	22	33	BFP-150-20/AS-F
2	150	25	305	260	12	22	38	BFP-150-25/AS-F
3	150	32	305	260	12	22	43	BFP-150-32/AS-F
4	200	20	380	324	12	22	45	BFP-200-20/AS-F
5	200	25	380	324	12	22	49	BFP-200-25/AS-F
6	200	32	380	324	12	22	53	BFP-200-32/AS-F
7	250	20	430	381	12	26	49	BFP-250-20/AS-F
8	250	25	430	381	12	26	57	BFP-250-25/AS-F
9	250	32	430	381	12	26	65	BFP-250-32/AS-F
10	300	20	490	438	16	26	57	BFP-300-20/AS-F
11	300	25	490	438	16	26	65	BFP-300-25/AS-F
12	300	32	540	438	16	26	73	BFP-300-32/AS-F

### Disclaimer

Whilst every care is taken to ensure that the information on this website is complete and accurate, AdComp Processing Technology Pvt. Ltd. India cannot accept responsibility for any omissions or inaccuracies or for any consequences arising therefrom. By using this website, the user accepts the terms of this disclaimer.

07-02-2023